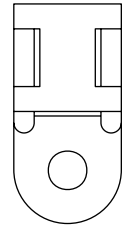


Cradle Mounts

CABLE TIE EXPRESS PART NUMBER	LENGTH INCHES	WIDTH INCHES	HEIGHT INCHES	BASE COLOR	PACKAGE QUANTITY	FOR TIE STRENGTHS	MOUNT HOLE SIZE
----------------------------------	------------------	-----------------	------------------	---------------	---------------------	----------------------	--------------------

EXTERNAL NATURAL

CME-6-N-100	.750	.375	.187	Natural	100	18-50 lbs	#6
CME-6-N-1000	.750	.375	.187	Natural	1000	18-50 lbs	#6
CME-10-N-100	.750	.375	.187	Natural	100	18-50 lbs	#10
CME-10-N-1000	.750	.375	.187	Natural	1000	18-50 lbs	#10

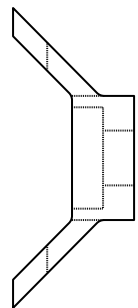
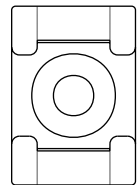


EXTERNAL UV BLACK

CME-6-UV-100	.750	.375	.187	UV Black	100	18-50 lbs	#6
CME-6-UV-1000	.750	.375	.187	UV Black	1000	18-50 lbs	#6
CME-10-UV-100	.750	.375	.187	UV Black	100	18-50 lbs	#10
CME-10-UV-1000	.750	.375	.187	UV Black	1000	18-50 lbs	#10

INTERNAL NATURAL

CMI-6-N-100	.625	.375	.250	Natural	100	18-50 lbs	#6
CMI-6-N-1000	.625	.375	.250	Natural	1000	18-50 lbs	#6
CMI-6S-N-100	.500	.250	.250	Natural	100	18-40 lbs	#6
CMI-10-N-100	.875	.625	.375	Natural	100	18-175 lbs	#10
CMI-10-N-1000	.875	.625	.375	Natural	1000	18-175 lbs	#10
CMI-14-N-100	.875	.625	.375	Natural	100	18-175 lbs	1/4
CMI-14-N-1000	.875	.625	.375	Natural	1000	18-175 lbs	1/4
CMI-10Y-N-100	1.187	.500	.500	Natural	100	18-175 lbs	#10

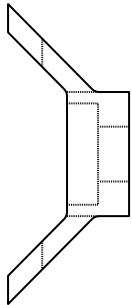
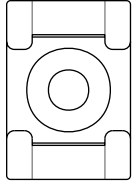


Cradle Mounts

CABLE TIE EXPRESS PART NUMBER	LENGTH INCHES	WIDTH INCHES	HEIGHT INCHES	BASE COLOR	PACKAGE QUANTITY	FOR TIE STRENGTHS	MOUNT HOLE SIZE
----------------------------------	------------------	-----------------	------------------	---------------	---------------------	----------------------	--------------------

INTERNAL UV BLACK

CMI-6-UV-100	.625	.375	.250	UV Black	100	18-50 lbs	#6
CMI-6-UV-1000	.625	.375	.250	UV Black	1000	18-50 lbs	#6
CMI-6S-UV-100	.500	.250	.250	UV Black	100	18-40 lbs	#6
CMI-10-UV-100	.875	.625	.375	UV Black	100	18-175 lbs	#10
CMI-10-UV-1000	.875	.625	.375	UV Black	1000	18-175 lbs	#10
CMI-14-UV-100	.875	.625	.375	UV Black	100	18-175 lbs	1/4
CMI-14-UV-1000	.875	.625	.375	UV Black	1000	18-175 lbs	1/4
CMI-10Y-UV-100	1.187	.500	.500	UV Black	100	18-175 lbs	#10



Define & ORGANIZE

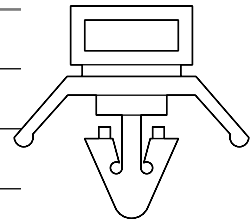
It's all about options and Cable Tie Express can provide them to you! Our Cradle Mounts with the deep recessed screw hole are the perfect option for supporting larger bundles.

Push Tie Mounts

CABLE TIE EXPRESS PART NUMBER	MOUNT HOLE SIZE	FOR TIE STRENGTHS	PACKAGE QUANTITY
-------------------------------	-----------------	-------------------	------------------

PUSH TIE MOUNTS NATURAL

PTM-4-N-100	#10	18-40 lbs	100
PTM-65-N-100	.31	18-120 lbs	100
PTM-8-N-100	.25	18-175 lbs	100
PTM-9-N-100	.31	18-175 lbs	100



PUSH TIE MOUNTS BLACK

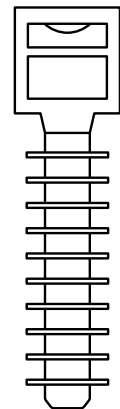
PTM-4-B-100	#10	18-40 lbs	100
PTM-65-B-100	.31	18-120 lbs	100
PTM-8-B-100	.25	18-175 lbs	100
PTM-9-B-100	.31	18-175 lbs	100

Wall Plug Mounts

CABLE TIE EXPRESS PART NUMBER	PLUG HEIGHT INCHES	HEAD HEIGHT INCHES	WIDTH INCHES	PLUG COLOR	CABLE TIE USE	PACKAGE QUANTITY
-------------------------------	--------------------	--------------------	--------------	------------	---------------	------------------

WALL PLUG MOUNTS

WPM-5-B-100	1.00	.25	.25	Black	18-50 lbs	100
WPM-6-B-100	1.00	.25	.25	Black	18-175 lbs	100
WPM-8-B-100	1.50	.25	.38	Black	18-175 lbs	100
WPM-9-B-100	1.50	.50	.38	Black	(2)18-175 lbs	100



Define
& ORGANIZE

Insert these Push Tie Mounts into a pre-drilled hole. No adhesive backing or additional mounting hardware is required. The winged base provides the extra stability needed for high vibration.

Reduce time and cost with the quick mount results from our Wall Plug Mounts. No need for a mechanical fastener.